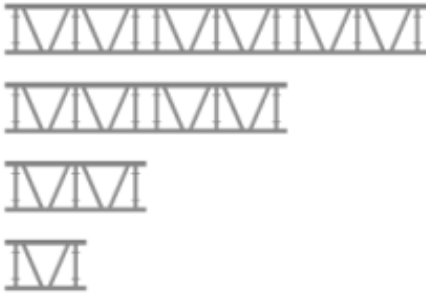


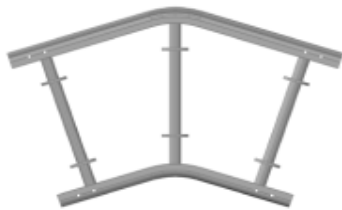
DELTA BEAM DB750



Length (m)	Kg	Art.no.
6.00	10.9	PS75100
4.00	18.6	PS75200
2.00	37.2	PS75400
1.00	55.8	PS75600

RIDGE BEAM

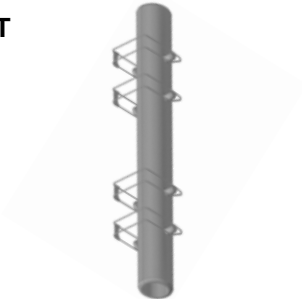
aluminium



Code	Kg	Art.no.
DB750 Ridge beam 18° 2 ridge beams makes one corner beam	11.8	PS75340

BEAM SPIGOT

aluminium



Length (m)	Kg	Art.no.
0.5	1.2	PS75345

PURLIN FRAME

aluminium



Length (m)	Kg	Art.no.
3.00	8.8	PS75311
2.50	7.8	PS75312
2.57	7.9	PS75312A
1.90	6.8	PS75313
1.60	5.9	PS75314
1.20	5.1	PS75315

DOUBLE PURLIN FRAME for RB

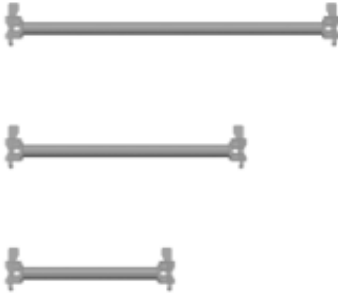
aluminium



Length (m)	Kg	Art.no.
3.00	11.3	PS75331
2.50	9.8	PS75332
2.57	10.7	PS75332A
1.90	8.3	PS75333
1.60	7.4	PS75334
1.20	6.2	PS75335
1.00	5.4	PS75336

SINGLE GUARDRAIL

aluminium



Length (m)	Kg	Art.no.
1.00	2.2	PS75326
0.70	1.9	PS75327
0.50	1.7	PS75328

DIAGONAL

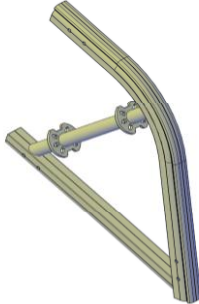
aluminium



Length (m)	Kg	Art.no.
3.00x0.85	5.4	PS75301
2.50x0.85	4.8	PS75302
2.57x0.85	4.8	PS75302A
1.90x0.85	4.3	PS75303
1.60x0.85	3.7	PS75304
1.20x0.85	3.3	PS75305

CORNER BEAM

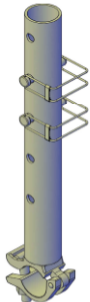
aluminium



Code	Kg	Art.no.
Corner beam	8.7	PS75450

ADJUSTABLE PIPE w/COUPLERS

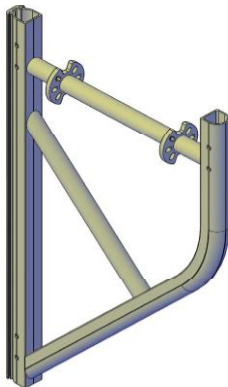
aluminium



Code	Kg	Art.no.
Adjustable pipe w/couplers	2.3	PS75451

STARTING BEAM

aluminium



Code	Kg	Art.no.	
Starting beam	8.7	PS75452	

SHEET PULLING BAR

aluminium



Code	Kg	Art.no.	
Sheet pulling bar	4.5	PS75350	

BEAMCRADLE WALL/ROOF 18°

aluminium



Code	Kg	Art.no.	
Beamcradle wall/roof 18°	10.4	PS75351	
Beamcradle wall/roof 18°	10.4	PS75351A	

BASE JACK

steel



Diam. x Height (mm)	Kg	Art.no.	
48x900	7.3	ST1225	

RATCHET

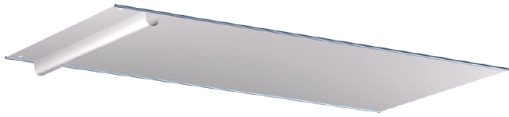
steel



Code	Kg	Art. nor.	
Ratchet	0,5	ST1010	

SHEET ON ROLL

PVC



Length (m)	Width	Art.no.	
60	3.0	PS1025	
	2.5	PS1026	
	1.9	PS1029	
	1.6	PS1031	
	1.2	PS1027	
	1.0	PS1034	

SHEET ON ROLL - with length as requested

PVC

Price per RM

Standard with pocket ca 0.5m in at both ends

2 pcs eyes at both ends for sheet pulling

Breadth x Width (m)	m	Art.no.	
3.00x 0-10 m	3.0	PS1025A	
3.00x 11-20 m	3.0	PS1025B	
3.00x 21-60 m	3.0	PS1025C	
2.45x 0-10 m	2.5	PS1026A	
2.45x 11-20 m	2.5	PS1026B	
2.45x 21-60 m	2.5	PS1026C	
1.90x 0-10 m	1.9	PS1029A	
1.90x 11-20 m	1.9	PS1029B	
1.90x 21-60 m	1.9	PS1029C	
1.60x 0-10 m	1.6	PS1031A	
1.60x 11-20 m	1.6	PS1031B	
1.60x 21-60 m	1.6	PS1031C	
1.20x 0-10 m	1.2	PS1027A	
1.20x 11-20 m	1.2	PS1027B	
1.20x 21-60 m	1.2	PS1027C	
1.00x 0-10 m	1.0	PS1034A	
1.00x 11-20 m	1.0	PS1034B	
1.00x 21-60 m	1.0	PS1034C	